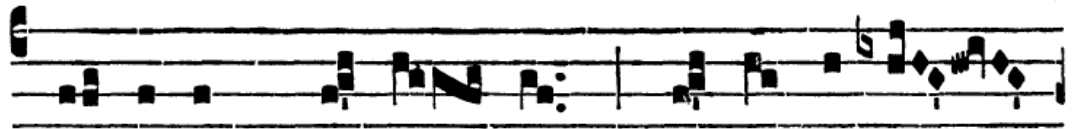


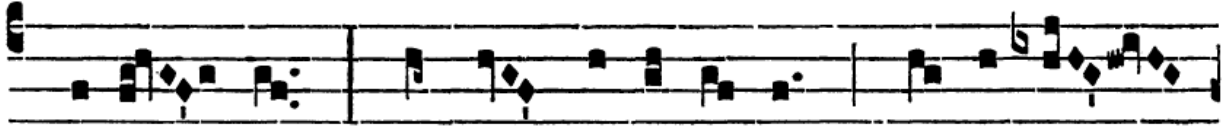
Intr.

6.

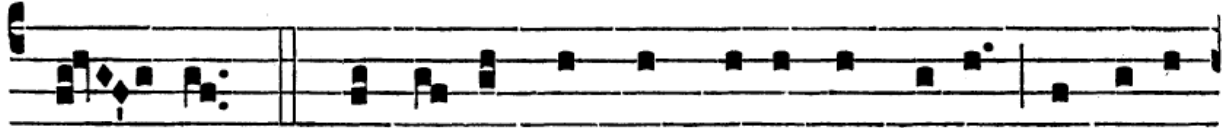
**R**



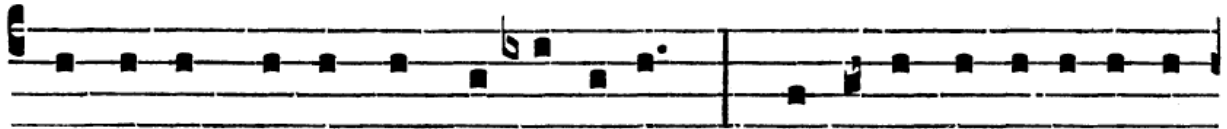
E-qui- em \* ae-tér- nam do- na e- is



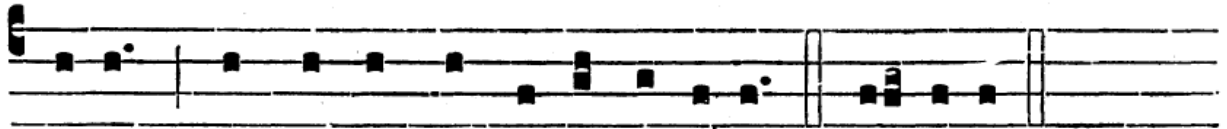
Dómi- ne : et lux perpé- tu- a lú- ce- at



e- is. *Ps.* Te de- cet hymnus De- us in Si- on, et ti- bi



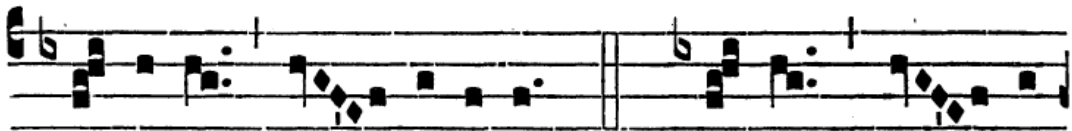
reddé- tur vo- tum in Je- rú- sa- lem : \* exáudi o- ra- ti- ó- nem



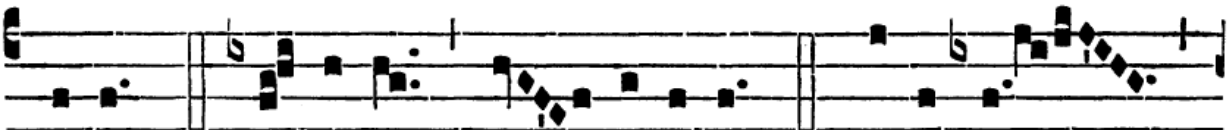
me- am, ad te omnis ca- ro vé- ni- et. Ré- qui- em.

6.

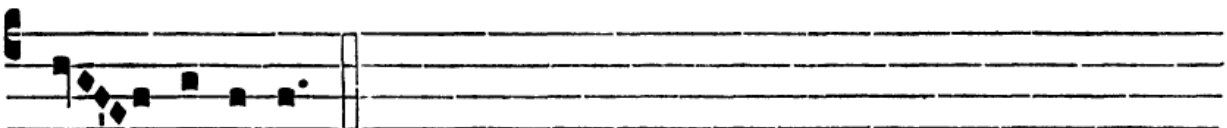
**K**



Y- ri- e \* e- lé- i- son. *ijj.* Chri- ste e- lé-



i- son. *ijj.* Ký- ri- e e- lé- i- son. *ij.* Ký- ri- e \*



e- lé- i- son.